



# The Sizewell C Project

---

## 2.4 Access and Rights of Way Plans Part 2 of 2

---

January 2021

Planning Act 2008  
Infrastructure Planning (Applications: Prescribed Forms and Procedure) Regulations 2009

Revision: 3.0  
Applicable Regulation: Regulation 5(2)(k)  
PINS Reference Number: EN010012



# Access and Public Rights of Way Plans – For Approval

Drawing Number	Revision	Drawing Title	Scale	Sheet Size
SZC-SZ0204-XX-000-DRW-100471	02	Rights of Way Plans Overview	1:125000	A1
SZC-SZ0204-XX-000-DRW-100485	02	Rights of Way Key Plan 1	1:40000	A1
SZC-SZ0204-XX-000-DRW-100486	02	Rights of Way Key Plan 2	1:40000	A1
SZC-SZ0704-XX-000-DRW-100513	01	Rights of Way Key Plan 3	1:40000	A1
SZC-SZ0204-XX-000-DRW-100342	02	Main Development Site and Rail Rights of Way Plans - Sheet 1 of 28	1:2500	A1
SZC-SZ0204-XX-000-DRW-100344	03	Main Development Site and Rail Rights of Way Plans - Sheet 2 of 28	1:2500	A1
SZC-SZ0204-XX-000-DRW-100346	02	Main Development Site and Rail Rights of Way Plans - Sheet 3 of 28	1:2500	A1
SZC-SZ0204-XX-000-DRW-100343	02	Main Development Site and Rail Rights of Way Plans - Sheet 4 of 28	1:2500	A1
SZC-SZ0204-XX-000-DRW-100347	02	Main Development Site and Rail Rights of Way Plans - Sheet 5 of 28	1:2500	A1
SZC-SZ0204-XX-000-DRW-100345	02	Main Development Site and Rail Rights of Way Plans - Sheet 6 of 28	1:2500	A1
SZC-SZ0204-XX-000-DRW-100357	02	Main Development Site and Rail Rights of Way Plans - Sheet 7 of 28	1:2500	A1
SZC-SZ0204-XX-000-DRW-100358	02	Main Development Site and Rail Rights of Way Plans - Sheet 8 of 28	1:2500	A1
SZC-SZ0204-XX-000-DRW-100359	02	Main Development Site and Rail Rights of Way Plans - Sheet 9 of 28	1:2500	A1
SZC-SZ0204-XX-000-DRW-100360	02	Main Development Site and Rail Rights of Way Plans - Sheet 10 of 28	1:2500	A1
SZC-SZ0204-XX-000-DRW-100418	02	Sports Facilities Rights of Way Plans - Sheet 11 of 28	1:2500	A1
SZC-SZ0204-XX-000-DRW-100483	02	Fen Meadow (Halesworth) Rights of Way Plans - Sheet 12 of 28	1:2500	A1
SZC-SZ0204-XX-000-DRW-100417	02	Fen Meadow (Benhall) Rights of Way Plans - Sheet 13 of 28	1:2500	A1
SZC-SZ0204-XX-000-DRW-100419	02	Marsh Harrier Habitat Rights of Way Plans - Sheet 14 of 28	1:2500	A1
SZC-SZ0204-XX-000-DRW-100334	02	Northern Park and Ride Rights of Way Plans - Sheet 15 of 28	1:2500	A1
SZC-SZ0204-XX-000-DRW-100335	02	Southern Park and Ride Rights of Way Plans - Sheet 16 of 28	1:2500	A1
SZC-SZ0204-XX-000-DRW-100336	03	Two Village Bypass Rights of Way Plans - Sheet 17 of 28	1:2500	A1
SZC-SZ0204-XX-000-DRW-100337	03	Two Village Bypass Rights of Way Plans - Sheet 18 of 28	1:2500	A1
SZC-SZ0204-XX-000-DRW-100338	02	Sizewell Link Road Rights of Way Plans - Sheet 19 of 28	1:2500	A1
SZC-SZ0204-XX-000-DRW-100339	03	Sizewell Link Road Rights of Way Plans - Sheet 20 of 28	1:2500	A1
SZC-SZ0204-XX-000-DRW-100340	03	Sizewell Link Road Rights of Way Plans - Sheet 21 of 28	1:2500	A1
SZC-SZ0204-XX-000-DRW-100341	03	Sizewell Link Road Rights of Way Plans - Sheet 22 of 28	1:2500	A1
SZC-SZ0204-XX-000-DRW-100354	02	Freight Management Facility Rights of Way Plans - Sheet 23 of 28	1:2500	A1
SZC-SZ0204-XX-000-DRW-100348	02	Yoxford Roundabout Rights of Way Plans - Sheet 24 of 28	1:1250	A1
SZC-SZ0204-XX-000-DRW-100353	02	A12/B1119 Junction at Saxmundham Rights of Way Plans - Sheet 25 of 28	1:1250	A1
SZC-SZ0204-XX-000-DRW-100350	02	A1094/B1069 Junction South of Knodishall Rights of Way Plans - Sheet 26 of 28	1:2500	A1

# Access and Public Rights of Way Plans – For Approval

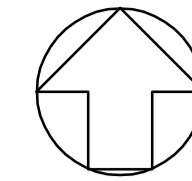
Drawing Number	Revision	Drawing Title	Scale	Sheet Size
SZC-SZ0204-XX-000-DRW-100352	02	A12 / A144 Junction South of Bramfield Rights of Way Plans - Sheet 27 of 28	1:1250	A1
SZC-SZ0704-XX-000-DRW-100355	01	Pakenham Fen Meadow Rights of Way Plans - Sheet 28 of 28	1:5000	A1

# Access and Public Rights of Way Plans For Approval – Revisions Schedule

Drawing Number	Revision	Drawing Title	Amendments
SZC-SZ0204-XX-000-DRW-100471	02	Rights of Way Plans Overview	Reflect updates to Order Limits
SZC-SZ0204-XX-000-DRW-100485	02	Rights of Way Key Plan 1	Reflect updates to Order Limits
SZC-SZ0204-XX-000-DRW-100486	02	Rights of Way Key Plan 2	Reflect updates to Order Limits
SZC-SZ0704-XX-000-DRW-100513	01	Rights of Way Key Plan 3	New Plan
SZC-SZ0204-XX-000-DRW-100342	02	Main Development Site and Rail Rights of Way Plans - Sheet 1 of 28	Reflect updates to Order Limits and clarification on footpath status
SZC-SZ0204-XX-000-DRW-100344	03	Main Development Site and Rail Rights of Way Plans - Sheet 2 of 28	Reflect updates to Order Limits. Clarification on footpath status, and inclusion of new footpath link between Aldhurst Farm and Kenton Hills
SZC-SZ0204-XX-000-DRW-100346	02	Main Development Site and Rail Rights of Way Plans - Sheet 3 of 28	Reflect updates to Order Limits and clarification on footpath status
SZC-SZ0204-XX-000-DRW-100343	02	Main Development Site and Rail Rights of Way Plans - Sheet 4 of 28	Reflect updates to Order Limits and clarification on footpath status
SZC-SZ0204-XX-000-DRW-100347	02	Main Development Site and Rail Rights of Way Plans - Sheet 5 of 28	Reflect updates to Order Limits and clarification on footpath status
SZC-SZ0204-XX-000-DRW-100345	02	Main Development Site and Rail Rights of Way Plans - Sheet 6 of 28	Reflect updates to Order Limits and clarification on footpath status
SZC-SZ0204-XX-000-DRW-100357	02	Main Development Site and Rail Rights of Way Plans - Sheet 7 of 28	Reflect updates to Order Limits and clarification on footpath status
SZC-SZ0204-XX-000-DRW-100358	02	Main Development Site and Rail Rights of Way Plans - Sheet 8 of 28	Reflect updates to Order Limits and clarification on footpath status
SZC-SZ0204-XX-000-DRW-100359	02	Main Development Site and Rail Rights of Way Plans - Sheet 9 of 28	Reflect updates to Order Limits and clarification on footpath status
SZC-SZ0204-XX-000-DRW-100360	02	Main Development Site and Rail Rights of Way Plans - Sheet 10 of 28	Reflect updates to Order Limits and clarification on footpath status
SZC-SZ0204-XX-000-DRW-100418	02	Sports Facilities Rights of Way Plans - Sheet 11 of 28	Update drawing number to out of 28
SZC-SZ0204-XX-000-DRW-100483	02	Fen Meadow (Halesworth) Rights of Way Plans - Sheet 12 of 28	Update drawing number to out of 28
SZC-SZ0204-XX-000-DRW-100417	02	Fen Meadow (Benhall) Rights of Way Plans - Sheet 13 of 28	Update drawing number to out of 28
SZC-SZ0204-XX-000-DRW-100419	02	Marsh Harrier Habitat Rights of Way Plans - Sheet 14 of 28	Update drawing number to out of 28
SZC-SZ0204-XX-000-DRW-100334	02	Northern Park and Ride Rights of Way Plans - Sheet 15 of 28	Minor reduction to the Order Limits due to a mapping/boundary discrepancy and design refinement. Update drawing number to out of 28 and clarification on footpath status
SZC-SZ0204-XX-000-DRW-100335	02	Southern Park and Ride Rights of Way Plans - Sheet 16 of 28	Reduction due to review of land ownership boundaries and design development. Update drawing number to out of 28 and clarification on footpath status
SZC-SZ0204-XX-000-DRW-100336	03	Two Village Bypass Rights of Way Plans - Sheet 17 of 28	Change in Order Limits to reflect latest design. Clarification on private means of access. Clarification on footpath status, and update drawing number to out of 28
SZC-SZ0204-XX-000-DRW-100337	03	Two Village Bypass Rights of Way Plans - Sheet 18 of 28	Change in Order Limits to reflect latest design. Clarification on footpath status. Update drawing number to out of 28 and inclusion of footpath diversion around Walk Barn Farm

# Access and Public Rights of Way Plans For Approval – Revisions Schedule

Drawing Number	Revision	Drawing Title	Amendments
SZC-SZ0204-XX-000-DRW-100338	02	Sizewell Link Road Rights of Way Plans - Sheet 19 of 28	Change in Order Limits to reflect latest design. Clarification on private means of access. Clarification on footpath status. Update drawing number to out of 28 and change to permanent footpath diversions to reflect latest design
SZC-SZ0204-XX-000-DRW-100339	03	Sizewell Link Road Rights of Way Plans - Sheet 20 of 28	Change in Order Limits to reflect latest design. Clarification on footpath status. Update drawing number to out of 28 and change to permanent footpath diversions to reflect latest design
SZC-SZ0204-XX-000-DRW-100340	03	Sizewell Link Road Rights of Way Plans - Sheet 21 of 28	Change in Order Limits to reflect latest design. Clarification on private means of access. Clarification on footpath status. Update drawing number to out of 28 and change to permanent footpath diversions to reflect latest design
SZC-SZ0204-XX-000-DRW-100341	03	Sizewell Link Road Rights of Way Plans - Sheet 22 of 28	Change in Order Limits to reflect latest design. Inclusion of permanent footpath diversion on northern side of Sizewell Link Road east of Moat Road. Clarification on footpath status. Update drawing number to out of 28 and change to permanent footpath diversions to reflect latest design
SZC-SZ0204-XX-000-DRW-100354	02	Freight Management Facility Rights of Way Plans - Sheet 23 of 28	No change to Order Limits, but update drawing number to out of 28
SZC-SZ0204-XX-000-DRW-100348	02	Yoxford Roundabout Rights of Way Plans - Sheet 24 of 28	Reduction due to land ownership boundaries. Update drawing number to out of 28. Clarification on footpath status
SZC-SZ0204-XX-000-DRW-100353	02	A12/B1119 Junction at Saxmundham Rights of Way Plans - Sheet 25 of 28	Minor reduction to the Order Limits due to a mapping/ boundary discrepancy. Update drawing number to out of 28
SZC-SZ0204-XX-000-DRW-100350	02	A1094/B1069 Junction South of Knodishall Rights of Way Plans - Sheet 26 of 28	Minor reduction to the Order Limits due to a mapping/boundary discrepancy. Update drawing number to out of 28
SZC-SZ0204-XX-000-DRW-100352	02	A12 / A144 Junction South of Bramfield Rights of Way Plans - Sheet 27 of 28	No change to Order Limits. Update drawing number to out of 28
SZC-SZ0704-XX-000-DRW-100355	01	Pakenham Fen Meadow Rights of Way Plans - Sheet 28 of 28	New Scheme



**NOTES:**

ALL FOOTPATHS, CYCLEPATHS, BRIDLEWAYS, BYWAYS AND RESTRICTED BYWAYS ARE REFERRED TO AS HIGHWAY (FOOTPATH).

ALL PUBLIC HIGHWAYS, INCLUDING THOSE WITH ADJACENT FOOTWAYS AND CYCLEWAYS, SHOWN ON THIS DRAWING ARE REFERRED TO AS HIGHWAY (ALL TRAFFIC)

**KEY:**

 ORDER LIMITS

02	JAN 2021	MW	ES	PROPOSED CHANGES TO THE DCO APPLICATION - JANUARY 2021	SZC Co
01	FEB 2020	MW	ES	DCO SUBMISSION	SZC Co
REVISION	DATE	DRAWN/CHECKED		REASONS FOR REVISION/COMMENTS	APPROVED

NOT PROTECTIVELY MARKED

**COPYRIGHT:**

Reproduced from Ordnance Survey map with the permission of Ordnance Survey on behalf of the controller of Her Majesty's Stationery Office © Crown copyright (2021). All Rights reserved. NNB GenCo Licence: 0100060408



PROJECT:  
SIZEWELL C

DOCUMENT:  
RIGHTS OF WAY PLANS  
REGULATION 5(2)(K)

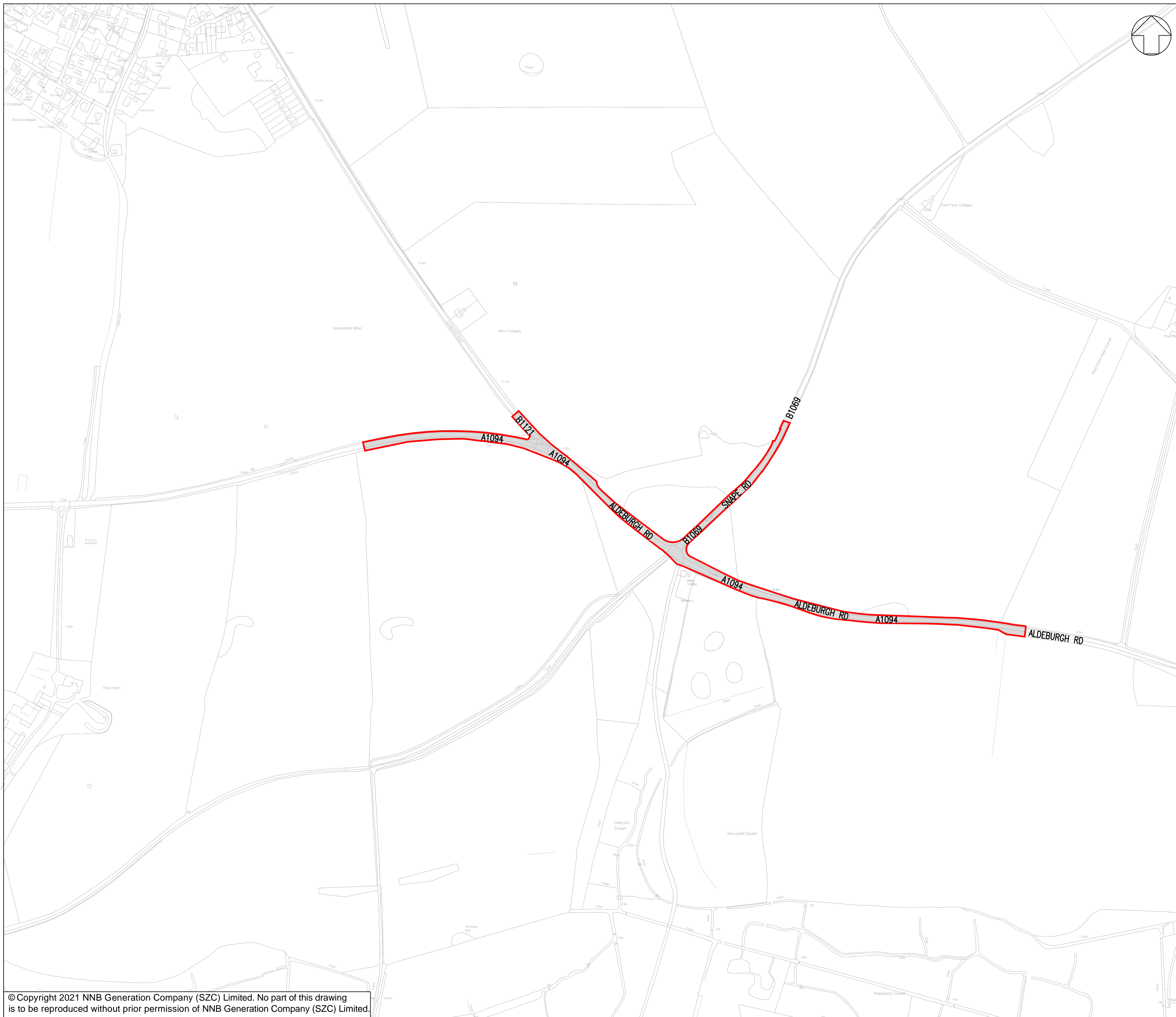
DRAWING TITLE:  
A12 / B1119 JUNCTION AT SAXMUNDHAM  
RIGHTS OF WAY PLANS - SHEET 25 OF 28

DRAWING NO:  
SZC-SZ0204-XX-000-DRW-100353

REVISION:  
02

DATE: JAN 2021    DRAWN: D.K.    SCALE: 1:1,250 @ A1

SCALE BAR:  
0    25    50    75    100    125 Metres



**NOTES:**  
 ALL FOOTPATHS, CYCLEPATHS, BRIDLEWAYS, BYWAYS AND RESTRICTED BYWAYS ARE REFERRED TO AS HIGHWAY (FOOTPATH).  
 ALL PUBLIC HIGHWAYS, INCLUDING THOSE WITH ADJACENT FOOTWAYS AND CYCLEWAYS, SHOWN ON THIS DRAWING ARE REFERRED TO AS HIGHWAY (ALL TRAFFIC)  
**KEY:**  
 [Red Box] ORDER LIMITS

02	JAN 2021	MW	ES	PROPOSED CHANGES TO THE DCO APPLICATION - JANUARY 2021	SZC Co
01	FEB 2020	MW	ES	DCO SUBMISSION	SZC Co
REVISION	DATE	DRAWN/CHECKED		REASONS FOR REVISION / COMMENTS	APPROVED

**NOT PROTECTIVELY MARKED**  
**COPYRIGHT:**  
 Reproduced from Ordnance Survey map with the permission of Ordnance Survey on behalf of the controller of Her Majesty's Stationery Office © Crown copyright (2021). All Rights reserved. NNB GenCo Licence: 0100060408

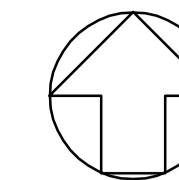


**PROJECT:**  
 SIZEWELL C

**DOCUMENT:**  
 RIGHTS OF WAY PLANS  
 REGULATION 5(2)(k)

**DRAWING TITLE:**  
 A1094 / B1069 JUNCTION SOUTH OF  
 KNODISHALL  
 RIGHTS OF WAY PLANS - SHEET 26 OF 28

DRAWING NO: SZC-SZ0204-XX-000-DRW-100350			REVISION: 02
DATE: JAN 2021	DRAWN: D.K.	SCALE: 1:2,500 @ A1	
SCALE BAR: 0 50 100 150 200 250 Metres			



**NOTES:**

ALL FOOTPATHS, CYCLEPATHS, BRIDLEWAYS, BYWAYS AND RESTRICTED BYWAYS ARE REFERRED TO AS HIGHWAY (FOOTPATH).

ALL PUBLIC HIGHWAYS, INCLUDING THOSE WITH ADJACENT FOOTWAYS AND CYCLEWAYS, SHOWN ON THIS DRAWING ARE REFERRED TO AS HIGHWAY (ALL TRAFFIC)

**KEY:**

ORDER LIMITS

NEW OR ALTERED POINT OF ACCESS



02	JAN 2021	MW	ES	PROPOSED CHANGES TO THE DCO APPLICATION - JANUARY 2021	SZC Co
01	FEB 2020	MW	ES	DCO SUBMISSION	SZC Co
REVISION	DATE	DRAWN/CHECKED		REASONS FOR REVISION / COMMENTS	APPROVED

**NOT PROTECTIVELY MARKED**

**COPYRIGHT:**

Reproduced from Ordnance Survey map with the permission of Ordnance Survey on behalf of the controller of Her Majesty's Stationery Office © Crown copyright (2021). All Rights reserved. NNB GenCo Licence: 0100060408



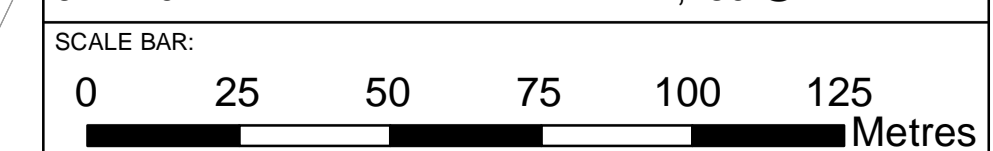
PROJECT:  
**SIZEWELL C**

DOCUMENT:  
**RIGHTS OF WAY PLANS  
REGULATION 5(2)(K)**

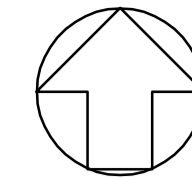
DRAWING TITLE:  
**A12 / A144 JUNCTION SOUTH OF BRAMFIELD  
RIGHTS OF WAY PLANS - SHEET 27 OF 28**

DRAWING NO: **SZC-SZ0204-XX-000-DRW-100352** REVISION: **02**

DATE: **JAN 2021** DRAWN: **D.K.** SCALE: **1:1,250 @ A1**







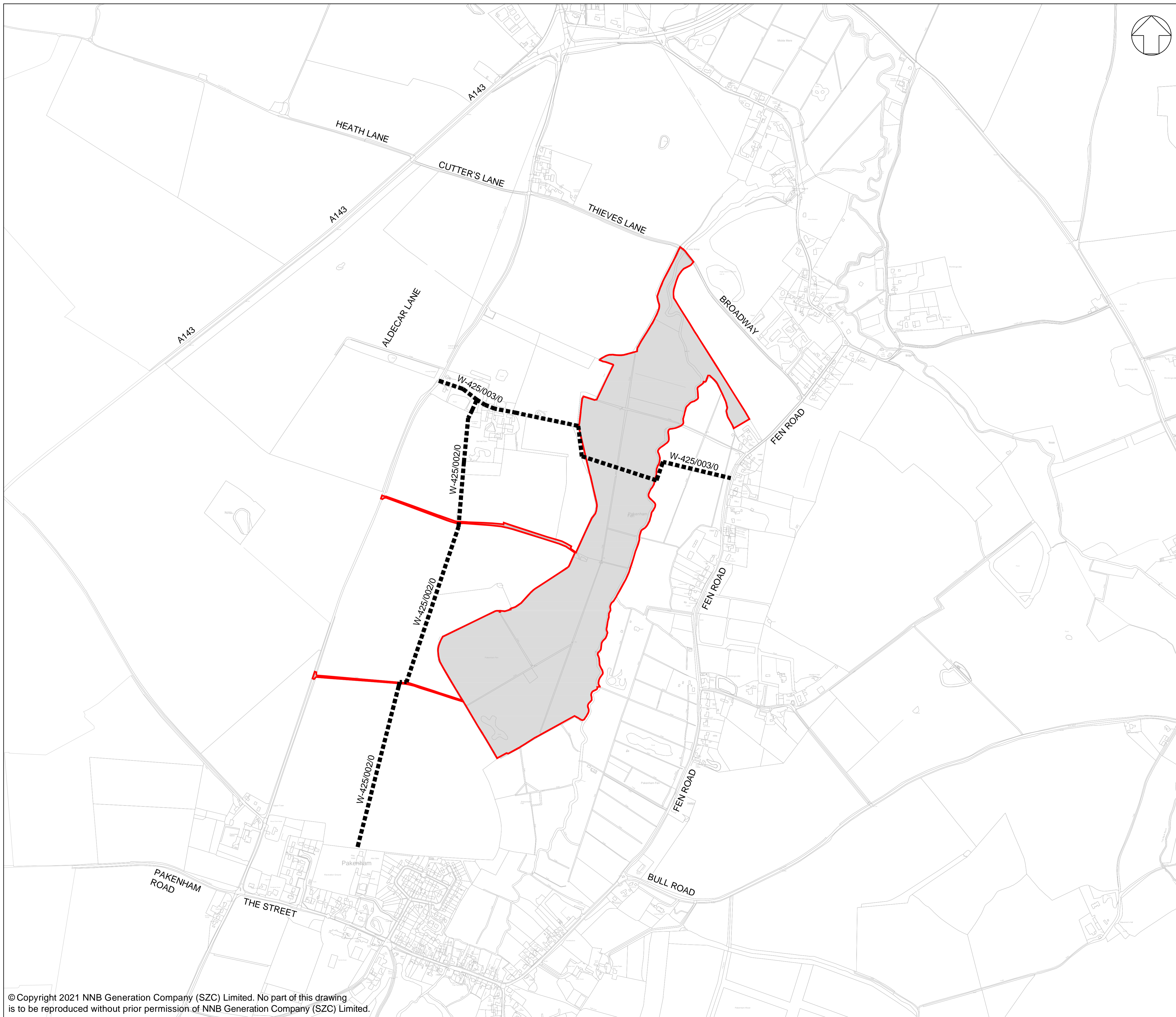
**NOTES:**

ALL FOOTPATHS, CYCLEPATHS, BRIDLEWAYS, BYWAYS AND RESTRICTED BYWAYS ARE REFERRED TO AS HIGHWAY (FOOTPATH).

ALL PUBLIC HIGHWAYS, INCLUDING THOSE WITH ADJACENT FOOTWAYS AND CYCLEWAYS, SHOWN ON THIS DRAWING ARE REFERRED TO AS HIGHWAY (ALL TRAFFIC)

**KEY:**

-  ORDER LIMITS
-  EXISTING HIGHWAY (FOOTPATH) TO BE RETAINED



01	JAN 2021	MW	ES	DCO SUBMISSION	SZC Co
REVISION	DATE	DRAWN/CHECKED	REASONS FOR REVISION / COMMENTS		APPROVED

NOT PROTECTIVELY MARKED

**COPYRIGHT:**  
 Reproduced from Ordnance Survey map with the permission of Ordnance Survey on behalf of the controller of Her Majesty's Stationery Office © Crown copyright (2021). All Rights reserved. NNB GenCo Licence: 0100060408



**PROJECT:**  
 SIZEWELL C

**DOCUMENT:**  
 RIGHTS OF WAY PLANS  
 REGULATION 5(2)(k)

**DRAWING TITLE:**  
 FEN MEADOW (PAKENHAM)  
 RIGHTS OF WAY PLANS - SHEET 28 OF 28

**DRAWING NO:** SZC-SZ0204-XX-000-DRW-100355 **REVISION:** 01

**DATE:** JAN 2021 **DRAWN:** M.W. **SCALE:** 1:5000

**SCALE BAR:** 0 250m